

## Technical Report

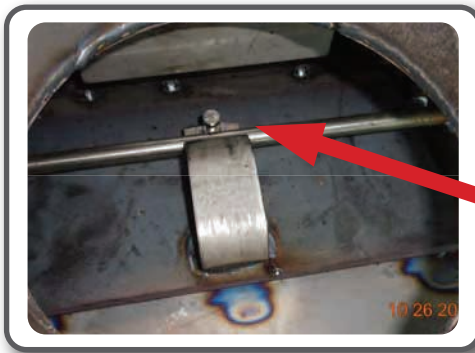
### Bypass Clamp Adjustment

#### Purpose

To maintain positive lock feel on bypass operation to prevent bypass door leakage while in catalytic mode.

---

#### Overview



- 1.) Remove the flue pipe to access bypass assembly
- 2.) Release the bypass handle slightly to obtain access to the bypass bolt.
- 3.) Loosen the 7/16" retaining nut on the bypass bolt
- 4.) Tighten the 7/16" bolt until the bypass handle, when closed, has a slight cam-over feel. **Do not over tighten.**



- 5.) Tighten the 7/16" retaining nut against the clamp. Work the bypass handle several times to be certain the bypass operation is smooth and working properly. At this time, apply high temperature anti seize lubricant to the rod and the underside of the clamp where the rod contacts.
- 6.) Replace the flue pipe.