

Blaze King Adjusting Thermostat Rod Tension

This instruction sheet will provide the necessary instruction to adjust the rod/blade tension on a Blaze King woodstove thermostat.

Indications: Thermostat will not stay at preset position

Tools reqd: #2 square drive screwdriver , flat blade screwdriver, 3/32" allen key, Vice grip lock plier, felt marking pen.

1) Insure stove is cold and at room temperature. Remove the two lower screws holding the main air tube



2) With the set screw against the stop, mark the set collar and the shaft to indicate relative position to each other

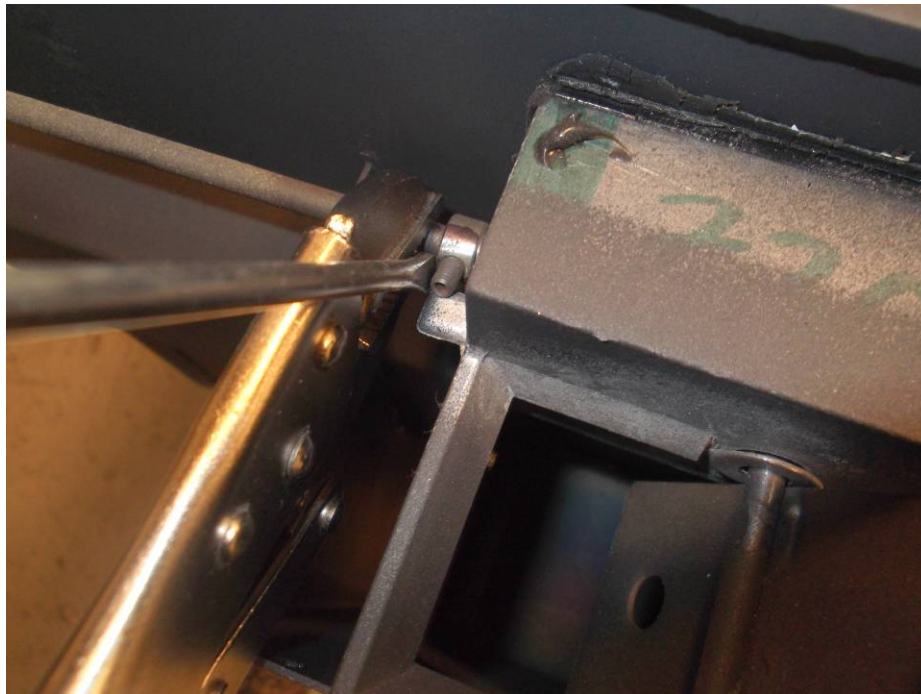


Blaze King Adjusting Thermostat Rod Tension

3) Loosen the set screw with the allen key, Do not allow the shaft or collar to turn. Clamp vise grip to shaft approx 1/4" away from collar.

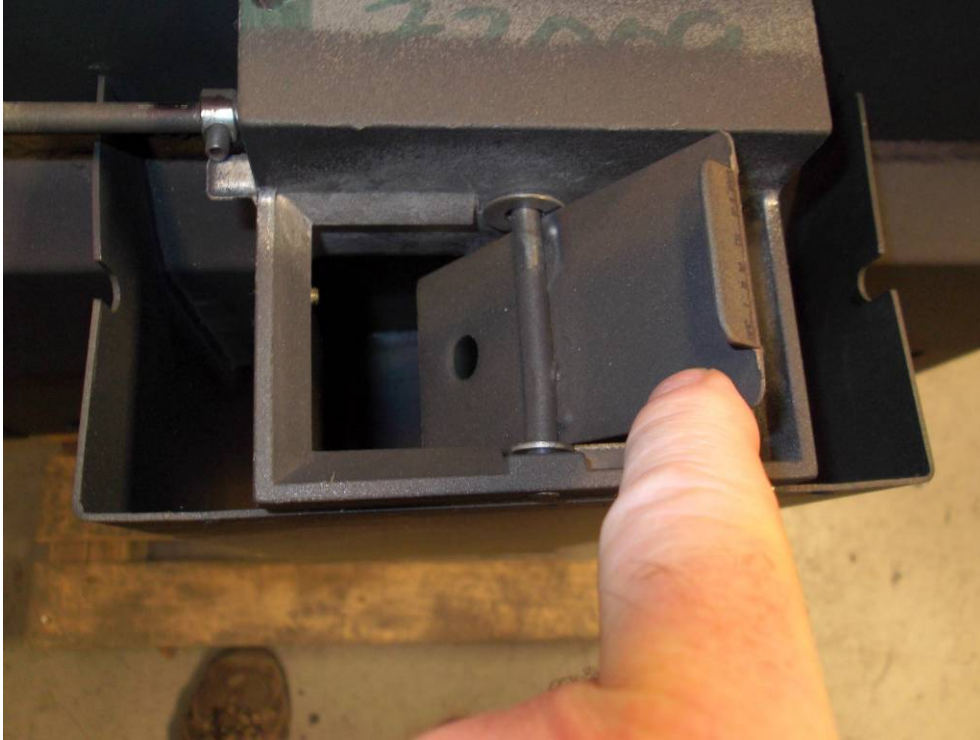


4) Using a flat blade screwdriver, pry against the vise grip to apply tension to the spring washers behind the set collar. While applying pressure, tighten the set screw once again



Blaze King Adjusting Thermostat Rod Tension

5) Insure the marks are still lined up. Check the tension on the rod by gently pushing down on the blade. The shaft should not turn. Check the operation of the adjustment knob to insure it moves freely and smoothly.



6) Replace the main air tube lid with the thermostat flap in the fully closed position only.

